


SALTAIRE LIVING ADVENT CALENDAR 2017

The Saltaire Living Advent Calendar has been a feature of our village since 2006, with one new window 'opened' (4pm - 10.30pm) each evening from the 1st December to 24th December and all remain lit until 5th January. With 14 houses and community buildings illuminated from 1 December, it is well worth a walk around the windows from the very beginning.

As usual, there's plenty happening in Saltaire in the run up to Christmas. The Saltaire Visitor Information Centre puts together a listing and in particular we would like to draw your attention to the Christmas Lights Switch On Event at Victoria Hall on Sunday 3 December from 5pm, and the Hall Royd Band will perform throughout the village on the evening of Monday 18 December.

Do join us strolling around the streets of Saltaire and enjoy each window as it opens. Each window will also be displayed on the Saltaire Village website and on Facebook, with snippets of information about the design and designers.

 [saltaireadventcalendar](https://www.facebook.com/saltaireadventcalendar)



On sale now!

12 Unique Saltaire Living Advent Calendar Christmas Cards for just £6

visit www.saltaireinspired.org.uk



Edward St Bakery are delighted to be sponsoring the Living Advent Calendar again in 2017

Edward St Bakery is a craft bakery based in Saltaire. We open to the public for pop up bakery events and supply various businesses with bread, cakes, pies, and all that happy jazz.

We have recently moved to the old book shop on Saltaire Road on the corner of Myrtle Place. We love our new home which puts us right in the middle of all the Saltaire fun!

You can follow us on twitter and Instagram @edwardstbakery.

Peace and Christmas love to all.



Saltaire Inspired is a volunteer-led charity organising community produced arts events in unique spaces in Saltaire. As well as Saltaire Living Advent Calendar, our annual events programme includes Saltaire Arts Trail in May and a Makers Fair in the Autumn.

For your Diary:

Saltaire Arts Trail 5 - 7 May 2018

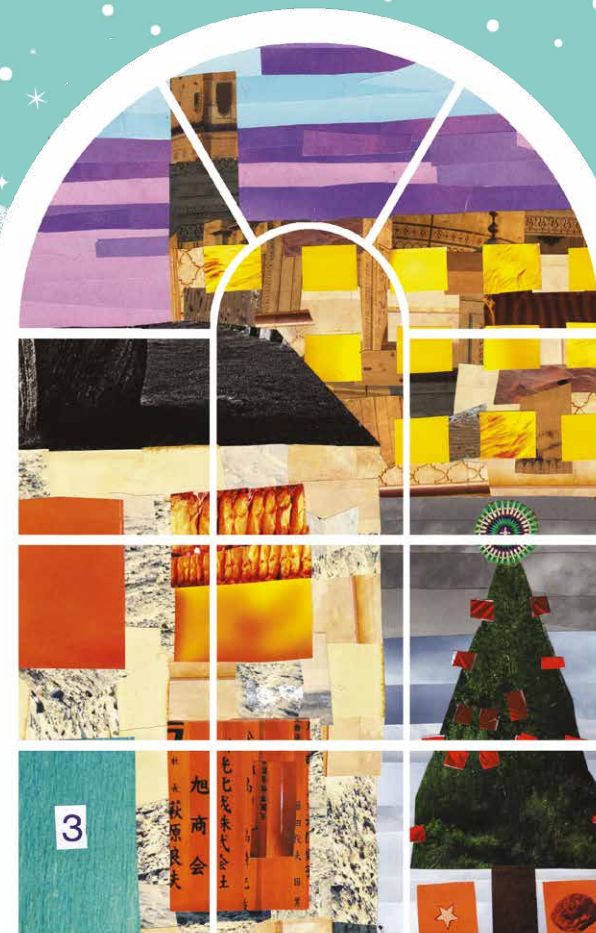
www.saltaireinspired.org.uk   

Registered Charity no. 1150701. Company Ltd. by guarantee no. 6670913

SALTAIRE
WORLD HERITAGE SITE



SALTAIRE LIVING ADVENT CALENDAR 2017



saltaireinspired.org.uk

 [saltaireadventcalendar](https://www.facebook.com/saltaireadventcalendar)

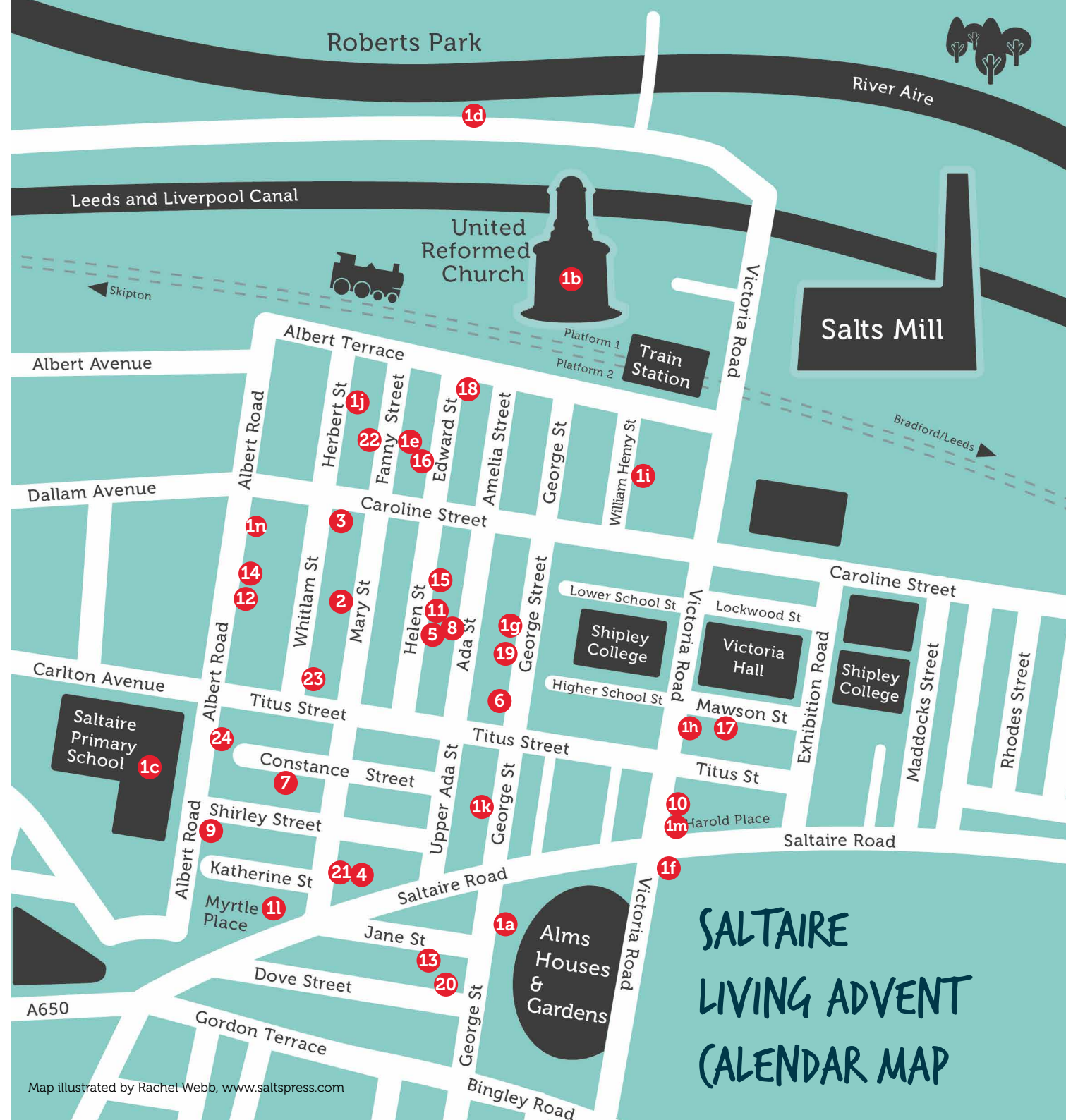


WHEN AND WHERE TO FIND US...



Windows from around the village will be illuminated with festive scenes. One new scene will be 'opened' each evening (4pm to 10.30pm) from the 1st to the 24th December - the numbers in the red circles are dates in December. All windows will then remain lit until 5th January.

- | | |
|---|-----------------------------|
| 1a Shipley Glen Tramway at 14 George St | 5 29 Helen St |
| 1b Saltaire United Reformed Church | 6 64 George St |
| 1c Saltaire Primary School | 7 28 Constance St |
| 1d Salts Sports Bar | 8 16 Ada St |
| 1e 4 Fanny St | 9 13 Albert Rd |
| 1f The Old Hospital, 66 Victoria Rd | 10 68 Victoria Rd |
| 1g 55 George St | 11 31 Helen St |
| 1h 74 Victoria Rd | 12 45 Albert Rd |
| 1i 7 William Henry St | 13 23 Jane St |
| 1j 12 Herbert St | 14 51 Albert Rd |
| 1k 71 George St (view from Upper Ada St) | 15 37 Helen St |
| 1l Edward St Bakery | 16 25 Edward St |
| 1m 67 Victoria Rd | 17 8 Mawson St |
| 1n 57 Albert Road | 18 14 Albert Terrace |
| 2 13 Mary St | 19 58 George St |
| 3 44 Whitlam St | 20 2 Dove St |
| 4 4 Daisy Place | 21 5 Daisy Place |
| | 22 24 Fanny St |
| | 23 23 Whitlam St |
| | 24 23 Albert Rd |



SALTAIRE LIVING ADVENT CALENDAR MAP